



CHC43315
CERTIFICATE IV in
MENTAL HEALTH



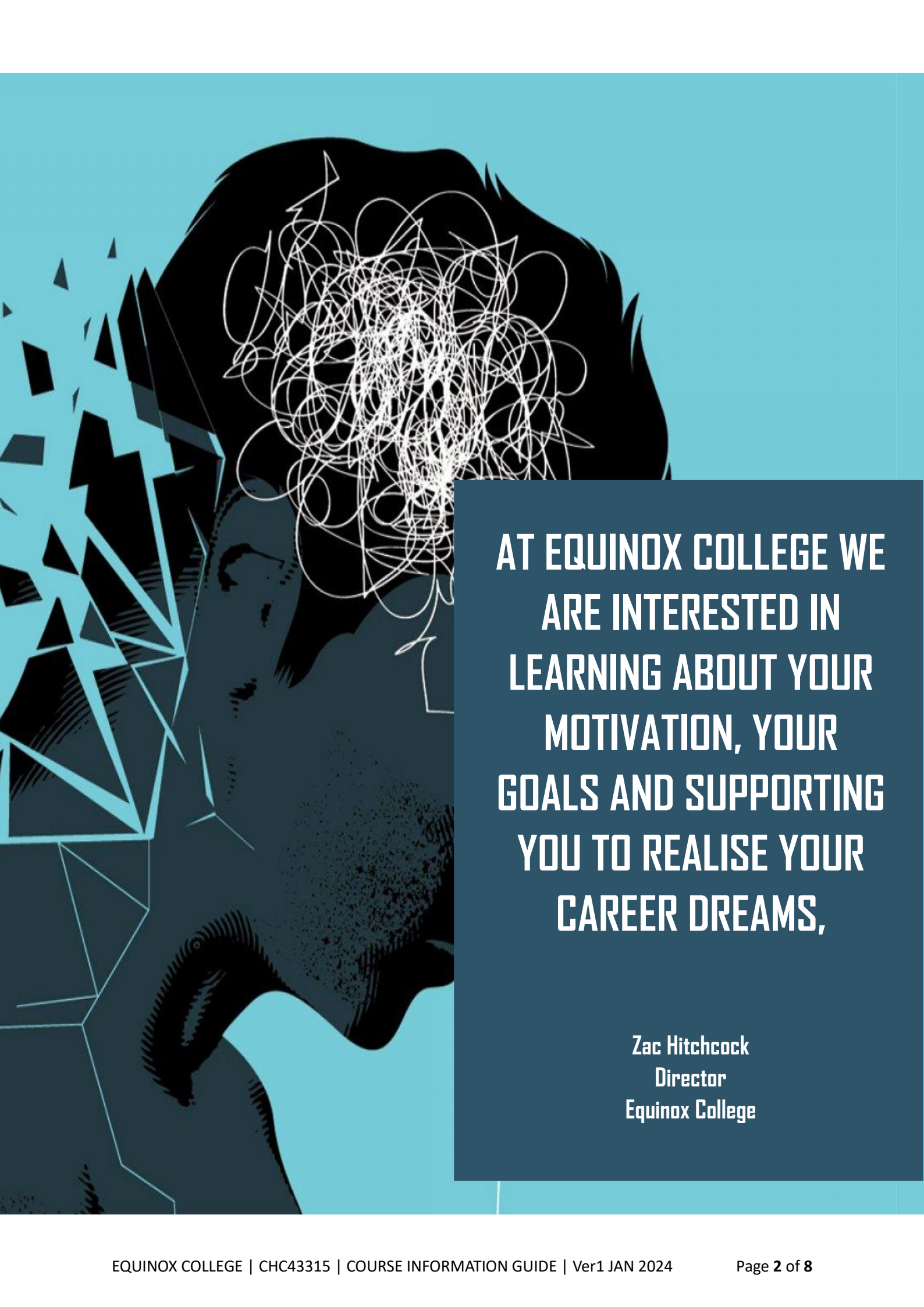
07 3106 3859



admin@equinoxsg.com.au



www.equinoxcollege.com.au



**AT EQUINOX COLLEGE WE
ARE INTERESTED IN
LEARNING ABOUT YOUR
MOTIVATION, YOUR
GOALS AND SUPPORTING
YOU TO REALISE YOUR
CAREER DREAMS,**

**Zac Hitchcock
Director
Equinox College**

ABOUT THIS QUALIFICATION

ENTRY REQUIREMENTS

Ideally, you would have obtained a Certificate III in a community services based qualification previously, (however, this is not mandatory)

On enrolment you will be required to provide/complete:

- Colour copy of your Driver's Licence or other photo ID
- Unique Student Identification Number (USI) If you do not hold a USI Number or have forgotten your USI Number, please visit the link provided below: <https://www.usi.gov.au/students/create-usi>
- Achieve a level of language, literacy and numeracy appropriate for a Certificate IV course via our Language, Literacy and Numeracy Skills Indicator
- Current employment, working with people living with mental health issues will greatly assist students meet the mandatory 80hours of practical placement requirements of the program (other students will be required to source and undertake placement in a suitable service).

This qualification reflects the role of workers who provide self-directed recovery oriented support for people affected by mental illness and psychiatric disability.

Work involves implementing community based programs and activities focusing on mental health, mental illness and psychiatric disability. Work is undertaken in a range of community contexts such as community based non-government organisations; home based outreach; centre-based programs; respite care; residential services, rehabilitation programs; clinical settings; or supporting people in employment. Work is carried out autonomously under the broad guidance of other practitioners and professionals.

The Certificate IV in Mental Health course (CHC43315 Certificate IV in Mental Health) will teach you the skills and knowledge required to deal with a variety of clients experience mental health issues, in a range of situations. You will work to increase your clients emotional, physical and social wellbeing.

OUR PROGRAM

COURSE DELIVERY



ONLINE



This program is available: Online (learn@home) and Recognised Prior Learning (RPL). Different criteria apply for each of these delivery modes, so speak with one of our Course advisors for more information. Our online program is delivered over 30 weeks, where you will meet with your trainer fortnightly via Zoom to discuss the topic and assessment requirements. A high level of self-direct learning is required by students.

.If you currently work in the sector there is a good chance your current role will meet some or all of the requirements of the mandatory 80 hours for this course.

CAREER OUTCOMES

PSYCHOSOCIAL RECOVERY COACH

Psychosocial recovery coaches support individuals with psychosocial disability to recognise, reflect and take responsibility of their own recovery.

Recovery coaches work with individuals with psychosocial disability to:

- Develop a recovery-enabling relationship
- Increase awareness of choice and control
- Identify individual goals and develop strategies to achieve them
- Provide ongoing support and engagement (even in times of increased needs due to variation in individual mental illness)
- Build individual capacity, increase recovery skills, resilience and decision making.

AREAS OF EMPLOYMENT

PRIVATE SECTOR DISABILITY SERVICES

Working within a registered NDIS organisation to provide individualised and personalised supports to participants.

PUBLIC SECTOR DISABILITY SERVICES

You will work within a government department providing supports to participants with often high and complex needs.

MENTAL HEALTH SERVICES

Providing recovery-oriented support to clients including in relation to social supports, links to mental health treatment, housing and employment services and a quality lifestyle in the community.

WHAT YOU WILL STUDY

FURTHER LEARNING PATHWAYS

This qualification may be a good introductory qualification for people looking to move into further training, such as:

- Diploma of Leadership in Disability Services
- Diploma of Community Services
- Advanced Diploma of Community Sector Management

At Equinox College, on completion of your studies, you will receive a nationally recognised qualification in:

CHC43315 Certificate IV in Mental Health

There are 15 units of competency to complete:

- 11 core units
- 4 elective units,

We have chosen four (4) elective units which may which serve as assisting with the decision of career pathway or further study opportunities. Speak to our Course Advisor for more information.



UNITS IN THIS QUALIFICATION

CORE UNITS

CHCDIV001	WORK WITH DIVERSE PEOPLE
CHCDIV002	PROMOTE ABORIGINAL AND/OR TORRES STRAIT ISLANDER CULTURAL SAFETY
CHCLEG001	WORK LEGALLY AND ETHICALLY
CHCMHS002	ESTABLISH SELF-DIRECTED RECOVERY RELATIONSHIPS
CHCMHS003	PROVIDE RECOVERY ORIENTED MENTAL HEALTH SERVICES
CHCMHS004	WORK COLLABORATIVELY WITH THE CARE NETWORK AND OTHER SERVICES
CHCMHS005	PROVIDE SERVICES TO PEOPLE WITH CO-EXISTING MENTAL HEALTH AND ALCOHOL AND OTHER DRUGS ISSUES
CHCMHS007	WORK EFFECTIVELY IN TRAUMA INFORMED CARE
CHCMHS008	PROMOTE AND FACILITATE SELF ADVOCACY
CHCMHS011	ASSESS AND PROMOTE SOCIAL, EMOTIONAL AND PHYSICAL WELLBEING
HLTWHS001	PARTICIPATE IN WORKPLACE HEALTH AND SAFETY

ELECTIVE UNITS

CHCADV001	FACILITATE THE INTERESTS AND RIGHTS OF CLIENTS
CHCCCS019	RECOGNISE AND RESPOND TO CRISIS SITUATIONS
CHCPRP003	REFLECT ON AND IMPROVE OWN PROFESSIONAL PRACTICE
HLTWHS006	MANAGE PERSONAL STRESSORS IN THE WORK ENVIRONMENT

IT REQUIREMENTS

YOU WILL NEED ACCESS TO:

[AT MINIMUM]

- Basic computer skills
- Knowledge of common computing terms and word processing
- Proficiency with web browser software including navigating the internet
- Sending/receiving emails with attachments
- Meet technology requirements

TECHNOLOGY REQUIREMENTS

Operating system

- Recommended: Windows 10, MacOS Big Sur, iPad OS 14

Internet speed

- Use a broadband connection through USB wireless modem, ADSL2+, T1/T2, fibre optic or cable with the speed:
 - Viewing lecture recordings or conferencing - at least 5MB/sec
 - Viewing images and webpages - at least 2MB/sec

Internet browsers

- Compatible browsers include:
- Google Chrome 8x or later (recommended for optimal compatibility, this has been thoroughly tested on Windows)
- Safari 14 or later (recommended for optimal compatibility, this has been thoroughly tested on Mac)

Note that add-ons and toolbars can affect any browser's performance.

If you have any difficulty accessing Equinox College Moodle, check that you are using one of the supported browsers above before you contact external support.

Settings

- We recommend that the following be enabled:
 - Cookies
 - Popups (in both internet browser and security software)
 - JavaScript

Resource viewing

- We recommend that you use the latest version of Adobe Acrobat Reader.
 - To view all the resources uploaded to Moodle, you will probably need to have Microsoft Office (Word, Excel, PowerPoint) or an equivalent (e.g. Open Office, Viewer) installed.

Security

- With all firewalls, ensure that you enable uploading of files.



EQUINOX

COLLEGE

RTO No. 45040

